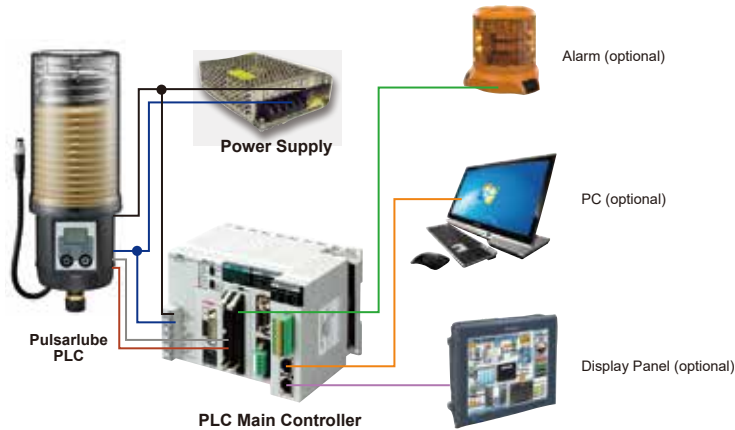
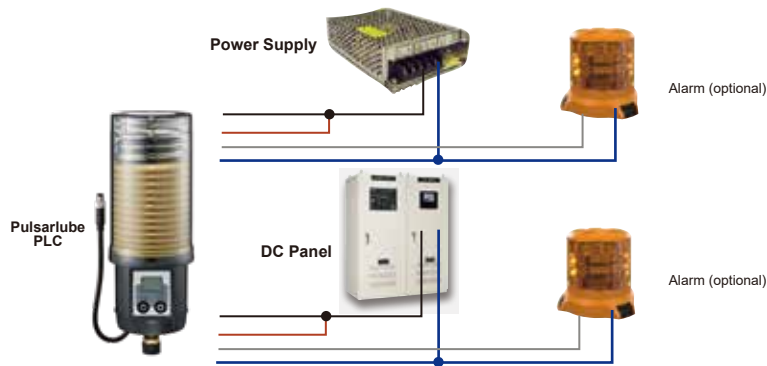


Connection Methods

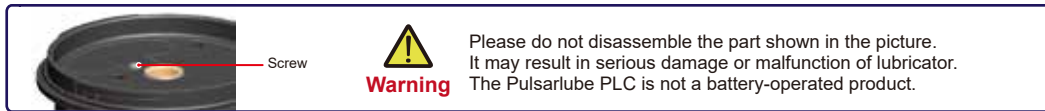
Connection to PLC equipment (For both models, MONTH type & INTERVAL type)



Connection to External Power Supply (DC Adapter) (MONTH type only)



Warning

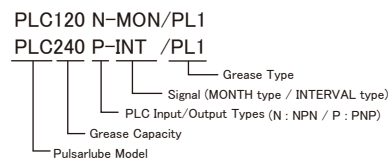


Shelf Life and Product Warranty

The shelf life of the Pulsarlube PLC is 1 year from the date of production. Product warranty is limited to original defects in material and workmanship and will not cover any collateral damage due to mishandling, abuse and/or any other inappropriate use of this product. Warranty period is 1 year from the date of purchase.

How to Order

* Must select between NPN and PNP types



Specifications

Specifications	Description
Grease Pouch	60,120,240,480ml
Operating Pressure	Avg. 30kgf/cm ² (425psi) Max. 60kgf/cm ² (850psi)
Power Supply	Power Supply: DC 9V ~ 36V max
Output Current	Max. 1A(1,000mA)
Operating Temperature	-20°C ~ +60°C* (-4°F ~ +140°F) *No battery needed
Available Dispensing Periods	MONTH TYPE : 1, 2, 3 ...10,11,12 Month INTERVAL TYPE : Mode 1, 2...6
Installation Thread Size	3/8" M PT
Installation Types	Single Point / Multi-Point
LCD	Backlit LCD

NOTE Technical information is subject to change without notice.

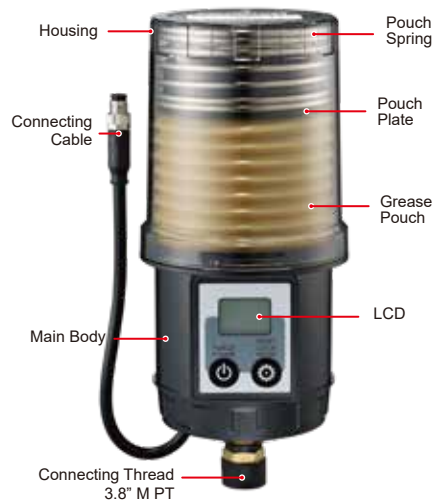
PRODUCT / PLC MODEL
PULSARLUBE PLC AUTOMATIC LUBRICATOR

ISO9001/14001

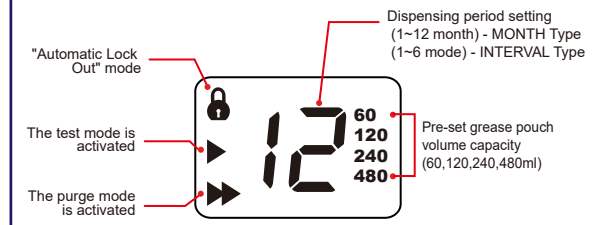
BEFORE USE

Thank you for purchasing the Pulsarlube PLC, the electromechanical automatic grease lubricator from Pulsarlube USA, Inc. To ensure the safe operation and proper installation of the Pulsarlube PLC unit, we strongly recommend that you read the following information carefully before use. If you require further information, please contact your local supplier or manufacturer.

Product Details



LCD Display



	Backlit LCD		Backpressure Indication
	Blinks when selected cycle ends		Purge mode in operation

Only use the supplied PLC connecting cable	PLC Connecting Cables (colors)	
	VCC (Power Supply Cable)	Black
	Signal Out (Alarm Signal Cable)	White
	GND (Power Supply Cable)	Blue
	Signal In (Operation Signal Cable)	Brown

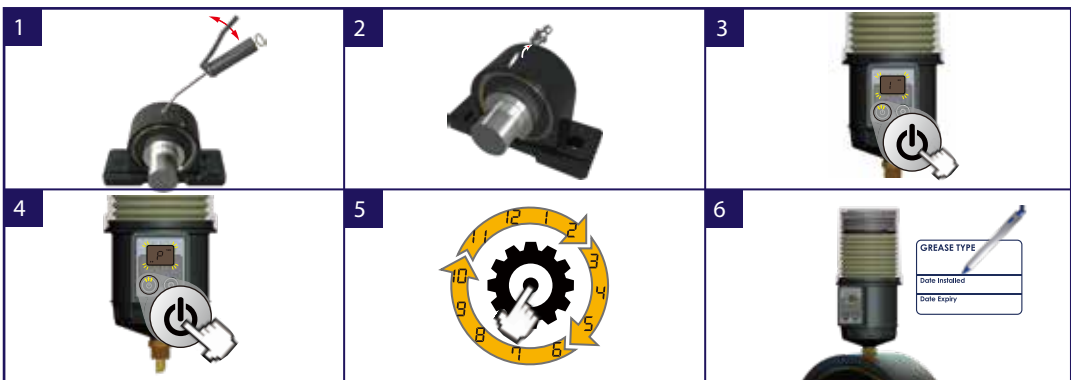
Button & LCD Functions

All icons	Power	Mode	Button press instructions			Blinking
			Short press	Press for 3 seconds	Press for 5 seconds	

(To be able to perform the functions below, please make sure that the lubricator's auto lock function is deactivated by pressing the MODE button for 3 seconds.)

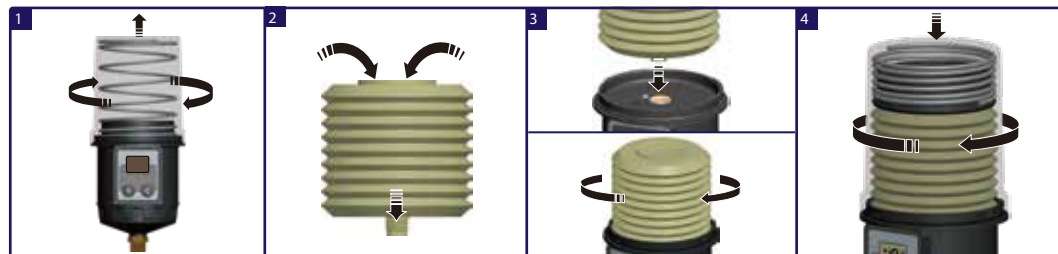
Buttons	Functions	Programming Instructions	LCD Indications
	Power ON/OFF	Power ON - Press for 3 seconds to power on.	ON) (Month Type) (Interval Type)
		Power OFF – Press for 5 seconds to power off.	OFF)
	Purge Mode	Activate Hold the button until 'P' appears on the screen.	6 continuous cycles
	Stop	Short press of the button to stop.	Lubricator goes back to normal setting
	Mode Setting	Short press of the MODE button to program the dispensing period. *1-12 month for MONTH type *Mode 1-6 for INTERVAL type	Operating
	Unlock	Press until Lock icon disappears.	Unlocked
	Reset	After lock function has been deactivated, press the MODE button for 5 seconds.	Re-set to default setting
	Backlight	Press the MODE button while holding down the POWER button,	(The backlight will stay on for 5 seconds.)

Installation Instructions



Service Pack Installation

If the Pulsarlube PLC unit is provided with a replaceable Service Pack, the following procedure is required before step #2 of the above instructions. For complete Service Pack installation instructions, please refer to the Service Pack user manual, step #2-6 in the section of "How to Replace a Service Pack".



Troubleshooting Guidelines

1. Please take the following steps to troubleshoot a malfunctioning unit.

LCD Indications	Possible Causes	Troubleshooting Steps
Normal	If LCD displays improperly <ul style="list-style-type: none"> • Electrical malfunction of CPU • Possible contact problem (open circuit) with programming buttons on the lubricators' control panel. 	Reset the unit. If technical difficulty continues, please contact your local supplier or manufacturer for further assistance.
Blank LCD	If unit displays a blank screen <ul style="list-style-type: none"> • Possible electrical malfunction of CPU or circuitry 	Inspect unit for tampering or water damage. If technical difficulty continues, please contact your local supplier or manufacturer for further assistance.

2. Please take the following steps if there is a grease dispensing failure.

LCD Indications	Possible Causes of Error Messages	Troubleshooting Steps
	Extreme backpressure encountered. Check for causes of high backpressure such as ... <ul style="list-style-type: none"> • Over lubrication • Hardened grease at the lube point • Kinked lube line • Max lube line distance on remote installation exceeded, etc. 	Remove the lubricator from the lube point. Press for 2 seconds Ensure that lubricator is dispensing properly. Reinstall the lubricator after resolving the cause of backpressure.
	If the lubricator reaches the end of its lube cycle and there is lubricant still remaining in the grease pack <ul style="list-style-type: none"> • Check for grease hardening within the grease pack or in the lube line. • Check how long your unit has been in operation. 	Remove grease pack from lubricator. Manually purge hardened grease out of grease pack then reinstall. If the lubricator is still not dispensing properly, replace used grease pack with new one. Lubricator may have reached its end of life cycle and may have to be replaced.
	When the selected dispensing period ends, LCD backlight will activate and display will blink.	Replace the empty grease pack with new one, then reset the unit.